



# Product Catalogue

## Newborn Hearing Screening

Quality Supplies for Hearing  
Healthcare Professionals

[www.sanibelsupply.eu](http://www.sanibelsupply.eu)

Valid from January 2022

**Sanibel**  
Supply



We know that, first and foremost, great quality is at the top of your list, and you'll find it in each and every purchase you make from Sanibel Supply.

Bringing you the products you need is what drives us every day.

If we can ever be of assistance, don't hesitate to let us know.

[info@sanibelsupply.com](mailto:info@sanibelsupply.com)

A handwritten signature in black ink, appearing to read 'J. Skovgaard', positioned above the printed name.

*Jakob Skovgaard*

*Business Unit Manager*



# Contents

**06** Disposable ear tips

**08** Probe tips

**10** Supplies for insert earphones

**12** Sanibel™ Infant EarCup™

**13** Sanibel™ EARturtle™

**14** Disposable electrodes

**16** Electrode cables

**18** Patient preparation

**20** Infection control

**22** Hearing aid fitting and various items

**23** Paper







# Selecting the correct ear tip

## Selecting the correct size of ear tip takes practice

In general, flanged or mushroom-shaped ear tips will be used for most testing (Impedance, DPOAE, TEOAE and Automated ABR).

Sometimes, an umbrella-shaped ear tip will be used for performing a quick impedance screening.

The table can be used as a guide to help you select the appropriate ear tip size.

Age	Ear tips inserted against ear canal	Ear tips inserted against entrance of ear canal			Ear tips for Echo-Screen®	Ear tips for AccuScreen®
0.5 y/o	 Green, pediatric				 4.0 mm, ANA	 3.7 mm, AOT
					 4.5 mm, ANA	 4.0 mm, AOT
		 3-5 mm, flanged	 3-6 mm, green	 6 mm, green	 5.0 mm, ANA	 4.5 mm, AOT
	 7.5 mm, umbrella	 4-7 mm, flanged	 6 mm, yellow		 infant tree, ANA	 5.0 mm, AOT
	 9 mm, umbrella	 5-8 mm, flanged			 mushroom, ANA	 4-7 mm, AOT
10 y/o	 10 mm, umbrella	 7 mm, mushroom	 7 mm, red	 7 mm, yellow		
	 11 mm, umbrella	 8 mm, mushroom	 8 mm, blue	 8 mm, red		
	 13 mm, umbrella	 9 mm, mushroom	 9 mm, green	 9 mm, blue		
		 10 mm, mushroom	 10 mm, yellow	 10 mm, green		
	 15 mm, umbrella	 11 mm, mushroom	 11 mm, red	 11 mm, yellow		
Adults		 12 mm, mushroom	 12 mm, blue	 12 mm, red		
	 19 mm, umbrella	 13 mm, mushroom	 13 mm, green	 13 mm, blue		
		 14 mm, mushroom	 14 mm, yellow	 14 mm, green		
		 15 mm, mushroom	 16 mm, red	 16 mm, yellow		
	 22 mm, umbrella	 19 mm, mushroom	 18.5 mm, blue			

# Why use ear tips for single use only?

## Sanibel Supply® recommends using disposable ear tips for single use only to stop ear infections from spreading

At Sanibel Supply® we think that most audiologists would agree with us that it is crucial to avoid inadvertent transmission of disease within the audiology clinic. The good news is that it is quite easy to ensure that ear infections are not spread from one patient to another; use a new ear tip for each patient, and you will significantly reduce or eliminate the incidences of cross contamination.

## Cerumen may be an infectious agent

Cerumen is not considered an infectious agent unless contaminated with blood or mucus, and due to its color and viscosity, visual detection of blood or ear discharge contaminants may be difficult. Therefore, you should treat cerumen as a potentially infectious agent. It is especially important to be mindful of using new tips when testing children and those with weaker immune systems, such as the frail and elderly as they are more susceptible to infections.

## Are disposable ear tips expensive?

Sanibel Supply® offers volume discounts on ear tips. This will often offset the time and cost involved in the ear tip cleaning process.

## Be more cost effective in your clinic

By using a new ear tip pr. every patient, you reach a seal much more reliable than with re-used ear tips. How often have you not been fumbling for minutes before you get a seal with a patient? Using the right ear tip and a fresh one pr. patient ensures you a reliable fit with every patient, meaning you can calculate less minutes for testing a patient and in most cases allow you to have an extra patient pr. day without having stressed out personnel. The cost of using one ear tip pr. patient is far less than what you earn on your next patient, plus you can promote your clinic as taking patient safety and hygiene seriously.

## 6 strong reasons why you should use a new ear tip after each patient:

# 1

### You reduce the risk of cross contamination between your patients

Unfortunately, it is not possible to be 100% certain that complete decontamination has taken place when cleaning ear tips.

# 2

### You minimize the risk of non-sealing ear tips

Ear tips degrade over time, which can make it more difficult to attain a good seal, hence leading to less accurate results.

# 3

### Your patients avoid allergic reactions from cleaning agent residue

Residue from cleaning agents may cause allergic reactions in some patients.

# 4

### Your patients will appreciate it

Patients feel safer and are more comfortable knowing that new ear tips are being used.

# 5

### It's so much easier

Cleaning ear tips takes time, so why not give your staff the time to do what really matters?

# 6

### It's so much faster

A fresh ear tip creates a seal quicker and more reliable, so you do not waste time performing a standard procedure.

## List of abbreviations

**ABR**

Auditory Brainstem Response

**HIF**

Hearing Instrument Fitting



Single patient use only!

**AUD**

Audiometry

**IMP**

Impedance



Product is not made with natural rubber latex

**BAL**

Balance

**OAE**

Otoacoustic Emissions

### Disposable Sanibel™ ADI ear tips

For use with the following acoustic immittance instruments and otoacoustic emission systems with CLEAR probe tip: **Amplivox**: all Otowave versions. **Interacoustics**: Titan, AT235, AA220, Eclipse, MT10, Sera, OtoRead II. **MAICO**: easyTymp, touchTymp MI 22, MI 23, MI 24, MI 26, MI 34, MI 44, easyScreen, EroScan Plus,



#### ADI Assortment Box

Part no.	Description
8501572	Screening ear tip kit, various sizes for newborn screening



**VOLUME DISCOUNT AVAILABLE** for minimum orders of 10 bags

#### Flanged infant ear tips

Part no.	Description	Unit
8502838	Pediatric (green)	Bag/100 pcs
8012964	3-5 mm (red)	Bag/100 pcs
8012966	4-7 mm (blue)	Bag/100 pcs
8012968	5-8 mm (yellow)	Bag/100 pcs
8502837	Pediatric (green)	Bag/25 pcs
8012963	3-5 mm (red)	Bag/25 pcs
8012965	4-7 mm (blue)	Bag/25 pcs
8012967	5-8 mm (yellow)	Bag/25 pcs



**VOLUME DISCOUNT AVAILABLE** for minimum orders of 10 bags

#### Mushroom ear tips

Part no.	Description	Unit
8013002	7 mm (blue)	Bag/100 pcs
8013004	8 mm (yellow)	Bag/100 pcs
8012970	9 mm (green)	Bag/100 pcs
8012972	10 mm (red)	Bag/100 pcs
8012974	11 mm (blue)	Bag/100 pcs
8012976	12 mm (yellow)	Bag/100 pcs
8012978	13 mm (green)	Bag/100 pcs
8012980	14 mm (red)	Bag/100 pcs
8012982	15 mm (blue)	Bag/100 pcs
8012984	19 mm (yellow)	Bag/100 pcs
8013001	7 mm (blue)	Bag/25 pcs
8013003	8 mm (yellow)	Bag/25 pcs
8012969	9 mm (green)	Bag/25 pcs
8012971	10 mm (red)	Bag/25 pcs
8012973	11 mm (blue)	Bag/25 pcs
8012975	12 mm (yellow)	Bag/25 pcs
8012977	13 mm (green)	Bag/25 pcs
8012979	14 mm (red)	Bag/25 pcs
8012981	15 mm (blue)	Bag/25 pcs
8012983	19 mm (yellow)	Bag/25 pcs



### Single use ear tips for immittance instruments & OAE screeners

For use with many acoustic immittance instruments and otoacoustic emission systems, including the **MAICO** EroScan, **Interacoustics** OtoRead and **Grason-Stadler** TympStar.



**VOLUME DISCOUNT AVAILABLE** for minimum orders of 10 bags



#### Infant ear tips

Part no.	Description	Unit
8013006	3 mm (yellow)	Bag/100 pcs
8002035	4 mm flanged (red)	Bag/100 pcs



### IA series ear tips

For use with many acoustic immittance instruments and otoacoustic emission systems, including: **GSI**: TympStar Pro, Allegro, Novus and Corti. **Interacoustics** (clear probe): AT235, AA222 and Titan and Otoread II, MT10. **MAICO**: touchTymp Racecar, touchTymp MI24, MI26, MI34, MI36, easyTymp. **Madsen/Otometrics**: Zodiac (new), Accuscreen. **Path Medical**: all Sentiero products.



Only available in selected countries

#### Mushroom ear tips

Part no.	Description	Unit
8515491	Sample Kit (3-18.5mm), 3, 6-10 count each	
8520348	3-6 mm (green)	Bag/100 pcs
8520349	6 mm (yellow)	Bag/100 pcs
8520350	7 mm (red)	Bag/100 pcs
8520351	8 mm (blue)	Bag/100 pcs
8520352	9 mm (green)	Bag/100 pcs
8520353	10 mm (yellow)	Bag/100 pcs
8520354	11 mm (red)	Bag/100 pcs
8520355	12 mm (blue)	Bag/100 pcs
8520356	13 mm (green)	Bag/100 pcs
8520357	14 mm (yellow)	Bag/100 pcs
8520358	16 mm (red)	Bag/100 pcs
8520359	18.5 mm (blue)	Bag/100 pcs



### Disposable Sanibel™ AOT and ANA ear tips



**VOLUME DISCOUNT AVAILABLE** for minimum orders of 10 bags

#### ANA ear tips for Echo-Screen®

For use with **Natus**: Echo-Screen®. **Madsen/Otometrics**: AccuScreen® Classic. **Interacoustics**: Eclipse with pink probe tip

Part no.	Description	Unit
8106363	4.0 mm (blue)	Bag/50 pcs
8106362	4.5 mm (red)	Bag/50 pcs
8106364	5.0 mm (green)	Bag/50 pcs
8106366	Infant tree (yellow)	Bag/50 pcs
8106365	Mushroom (green)	Bag/50 pcs



# Disposable ear tips

## Disposable Sanibel™ AOT and ANA ear tips



**VOLUME DISCOUNT AVAILABLE** for minimum orders of 10 bags

### AOT ear tips

For use with **Madsen/Otometrics** AccuScreen®, Biologic Bio-logic® AuDX®, **Path Medical**: all Sentiero products

Part no.	Description	Unit
8106367	3.7 mm (yellow)	Bag/50 pcs
8106368	4.0 mm (light green)	Bag/50 pcs
8106369	4.5 mm (light pink)	Bag/50 pcs
8106370	5.0 mm (light blue)	Bag/50 pcs
8106371	4-7 mm (transparent)	Bag/50 pcs



## Ear tips for OAE screeners

For use with **Biologic AuDX**, **Welch Allyn** OAE screener and **Natus** Echo-Screen® III.



### OAE ear tips, AuDX

Part no.	Description	Unit
8107885	AuDX Premie 3 mm	Bag/100 pcs
8107889	AuDX Tree 3.5-5mm	Bag/100 pcs
8107887	AuDX Infant 6 mm	Bag/100 pcs
8102681	Adult OAE foam	Bag/100 pcs
8102682	Pediatric OAE foam	Bag/100 pcs
8103123	Jumbo OAE foam	Bag/100 pcs
8515505	AuDX Premie 3 mm	Bag/20 pcs
8515506	AuDX Tree 3.5-5mm	Bag/20 pcs
8515507	AuDX Infant 6 mm	Bag/20 pcs
8515436	Adult OAE foam	Bag/20 pcs
8515435	Pediatric OAE foam	Bag/20 pcs
8515438	Jumbo OAE foam	Bag/20 pcs



## Grason & Associates OT & MO select series ear tips



### OT select ear tips w/ triangle holes

Ear tips with triangle holes for use with **Otodynamics** UGD, SND, SGD probes

Part no.	Description	Unit
8102644	4.8 mm (blue)	Bag/100 pcs
8102645	6 mm (green)	Bag/100 pcs
8102646	8 mm (red)	Bag/100 pcs
8102647	10 mm (blue)	Bag/100 pcs
8102648	12 mm (green)	Bag/100 pcs
8102649	14 mm (red)	Bag/100 pcs
8102650	16 mm (blue)	Bag/100 pcs



### OT select ear tips w/two probe holes

Ear tips with two probe holes for use with **Otodynamics** ECP, UGS, SNS, SGS probes.

Part no.	Description	Unit
8102632	3.5 mm (blue)	Bag/100 pcs
8102633	4.5 mm (blue)	Bag/100 pcs
8102634	5.5 mm (blue)	Bag/100 pcs
8102635	6.5 mm (blue)	Bag/100 pcs
8102636	4.8 mm (blue)	Bag/100 pcs
8102637	6 mm (green)	Bag/100 pcs
8102638	8 mm (red)	Bag/100 pcs
8102639	10 mm (blue)	Bag/100 pcs
8102640	12 mm (green)	Bag/100 pcs
8102641	14 mm (red)	Bag/100 pcs
8102642	16 mm (blue)	Bag/100 pcs



## Snap probe accessories

Accessories specifically designed to work with SnapPROBE®. For use with **Interacoustics** Sera, **GrasonStadler** Novus, **Maico** EasyScreen.

Part no.	Description	Unit
8522758	Ear tip Infant A (Conical)	Bag/100 pcs
8522760	Ear tip Infant C (Narrow)	Bag/100 pcs
8522759	Ear tip Infant A (Conical)	Bag/25 pcs
8522761	Ear tip Infant C (Narrow)	Bag/25 pcs
8517889	Probe Waxguard	Set 10 pcs
8516436	Probe Waxguard	1 pc
8522461	Assortment of accessories including Infant tip A and C and waxguard	





ABR IMP OAE

**Probe tip for Sanibel™ ADI™ ear tips**

Fits Titan™ and easyTymp™.

Part no.	Unit
8001701	1 pc



IMP OAE

**Probe tip kit**

Fits AT235™ or newer, AA222™, Sera™, Tympstar Pro™ Novus™, easyScreen™, and touchTymp™. Includes probe tip and gasket.

Part no.	Unit
8501570	Kit/3 pcs



OAE

**Internal probe tip replacements for ERO•SCAN™**

Fits ERO•SCAN™.

Part no.	Unit
8102339	Bag/4 pcs



OAE

**ER10D probe tips for ERO•SCAN™ Pro and OtoRead™**

It is recommended to clean the probe tip after every patient and to change the probe tip after 20 tests (40 ears). No re-calibration necessary.

Part no.	Unit
8012836	Bag/4 pcs



OAE

**Internal probe tip replacements for ERO•SCAN™ Pro**

Fits ERO•Scan™ Pro.

Part no.	Unit
8110364	Bag/4 pcs



OAE

**Probe tip kit for OAE Ø3.3 mm ear tips**

Fits all Eclipse™ – use with ADI™ ear tips. Requires no re-calibration.

Part no.	Unit
8012960	Bag/8 pcs



OAE

**Remote probe tip replacements for ERO•SCAN™**

Fits ERO•Scan™ Classic.

Part no.	Unit
8102340	Bag/4 pcs



## Probe tips



OAE

### Sanibel™ probe tubes for ADI™ ear tips

Fits Corti™, ERO•SCAN™ Plus and the new OtoRead™.

Part no.	Unit
8104159	Box/100 pcs

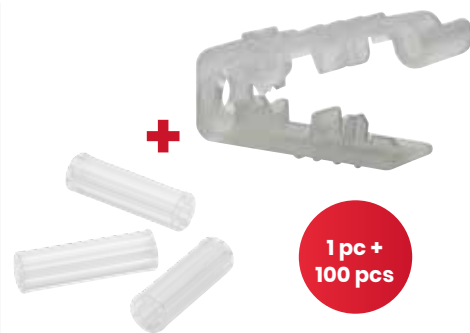


OAE

### Probe Tube Removal Tool

Fits Corti™, ERO•SCAN™ Plus and the new OtoRead™.

Part no.	Unit
8513131	Bag/1 pc



OAE

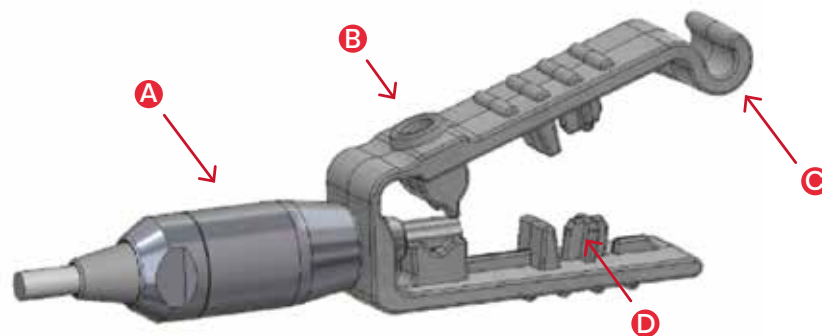
### Probe Tube Removal Tool Kit

Fits Corti™, ERO•SCAN™ Plus and the new OtoRead™.

Part no.	Unit
8513132	Bag/100 pcs + 1 pc

## Sanibel™ Probe Tube Removal Tool

- A = Probe
- B = Probe Tube Installer
- C = Attachment to probe cable
- D = Tube Remover

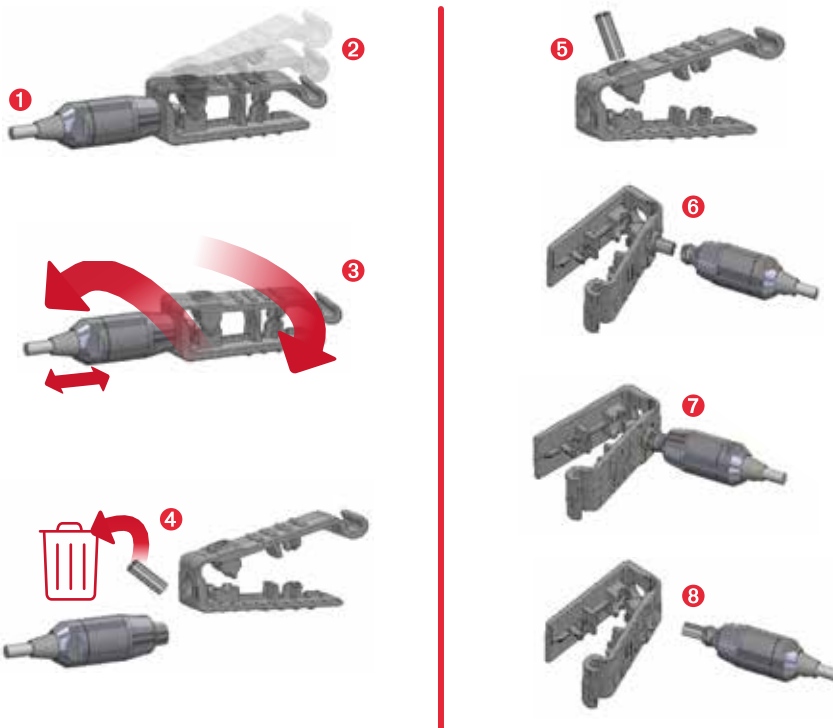


### To Remove a Probe Tube

- Place the front hole of the Probe Tube Tool over the end of the probe, as shown. The probe should be seated against the face of the tool and snap in place.
- Squeeze the tool closed and hold it.
- Twist the tool a couple of times while holding the tool closed and pulling away from the probe.
- The probe tube will pull out from the probe. Discard the probe tube.

### To Install a New Probe Tube

- Place a new tube into the hole on the top of the tool.
- Align the probe with the tube.
- Push the probe onto the probe tube until the probe contacts the face of the probe tube tool and a snapping sound is heard.
- Slide the tool off, leaving the tube in place in the probe.



# Supplies for insert earphones



ABR AUD

## Sanibel™ foam tip, small

Complies to all insert phones.

Part no.	Description	Unit
8527912	Pediatric pink	50 pcs
8527913	Pediatric pink	100 pcs
8527915	Pediatric pink	750 pcs



Not available in the EU

ABR

## E-A-RLINK™ infant ear tips

For use with infants or in very small ear canals.

Part no.	Description	Unit
8500300	3.5 mm	Bag/20 pcs
8500310	4.0 mm	Bag/20 pcs



ABR AUD

## Sanibel™ foam tip, medium

Complies to all insert phones.

Part no.	Description	Unit
8527918	Adult pink	50 pcs
8527920	Adult pink	100 pcs
8527921	Adult pink	750 pcs



ABR AUD

## Sanibel™ ADI ear tip adaptor

Makes Sanibel™ ADI ear tips compatible with 3A insert phones.

Part no.	Unit
8500580	Bag/6 pcs

Not available in the EU



ABR AUD

## 3A E-A-RLINK™ foam ear tips

Complies to all insert phones.

Part no.	Description	Unit
8500090	Adult/Medium size 13.7 mm	Bag/50 pcs
8106226	Adult/Medium size 13.7 mm	Bag/100 pcs



Not available in the EU

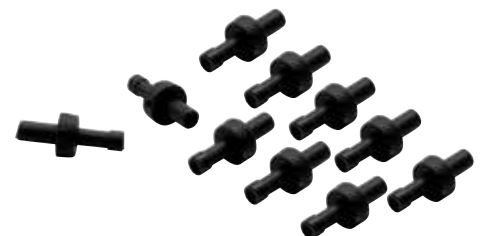


ABR AUD

## 3B E-A-RLINK™ foam ear tips

Complies to all insert phones.

Part no.	Description	Unit
8500110	Pediatric/Small size 9.7 mm	Bag/50 pcs
8106227	Pediatric/Small size 9.7 mm	Bag/100 pcs



ABR

## Sanibel™ IP30™ tube connectors

For use with IP30™ and E-A-Rtone® 3A.

Part no.	Unit
8107391	Bag/10 pcs

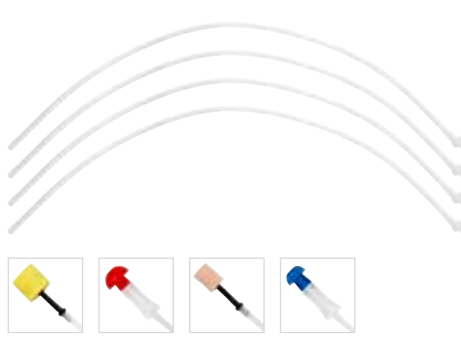
## Supplies for insert earphones



**ABR**  
**Sound tubes for E-A-Rtone® 3A  
 10 ohm**

Includes adaptor nipples.

Part no.	Unit
8107396	Bag/4 pcs



**ABR**  
**Sound tubes for E-A-Rtone® 3A  
 10 ohm**

Includes adaptor nipples.

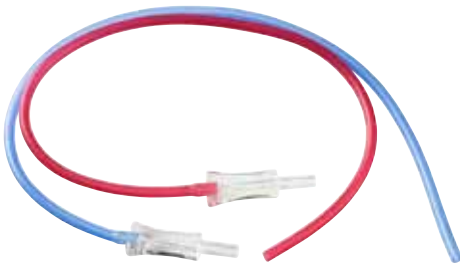
Part no.	Unit
8103605	Bag/4 pcs



**ABR**  
**Sanibel™ IP30 and E-A-Rtone®  
 sound tubes and nipples**

Fit all IP30™ and E-A-RTone® versions.  
 Includes tube connectors, 1 pc blue and  
 1 pc red 50 ohm.

Part no.	Unit
8501072	Set/2 pcs



**ABR** **AUD**  
**Sanibel™ sound tubes and  
 Sanibel™ ADI™ ear tip adaptor kit**

Fits E-A-Rtone® 3A inserts and IP30™ insert  
 phones. Includes ADI™ ear tip adaptors, 1 pc  
 blue and 1 pc red 50 ohm.

Part no.	Unit
8100590	Set/2 pcs



**ABR**  
**Sanibel™ fastener kit for IP30™**

Includes velcro neckstrap and clip.

Part no.	Unit
8507410	Set



**ABR** **OAE**  
**Sanibel™ ear tip adaptor  
 cleaning tool**

Small brush for cleaning the Sanibel™ probe  
 tip adaptors.

Part no.	Unit
8500830	Bag/10 pcs



Not  
 available  
 in the EU

**ABR**  
**ABR consumable kit**

Includes electrodes, insert phone tips,  
 skin scrub and gage.

Part no.	Description	Unit
8109670	Adult 3A	Kit/100 tests
8109671	Pediatric 3B	Kit/100 tests

2

LATEX

ABR

## Sanibel™ Infant EarCup™ with snap or tab electrodes

Reduce test time! Test on both ears in one screening. Compatible with Titan™, AccuScreen® (1st generation), MB II Classic and Echo-Screen®. Use only with equipment calibrated for over-ear style disposables. Disposable over-the-ear earphones are high quality, low cost, and ideal for bilateral newborn hearing screenings. 1 set consists of 2 Infant EarCups™, 3 snap or tab electrodes and 1 alcohol pad.

For use with a range of different providers of newborn hearing screening equipment: **Grason Stadler:** Novus. **Interacoustics:** Titan, Sera. **Maico:** easyScreen, MB II Classic. **Madsen/Otometrics:** Accuscreen. **Natus:** Biologic Abear, Echo-Screen.

Part no.	Description	Unit
8049600	Tab	Box/20 sets
8049700	Snap	Box/20 sets
8508848	w/o electrodes	Box/20 sets

## Sanibel Infant EarCup™ w/ Hydrogel

New Hydrogel version to ensure a more comfortable solution for the baby while testing.

Choose any electrode type you wish to add to meet your preference.

Order electrodes separately.

Part no.	Unit
8516095	Box/20 sets

Exchange the electrodes with your preferred version!  
**CONTACT US FOR SUPPORT**



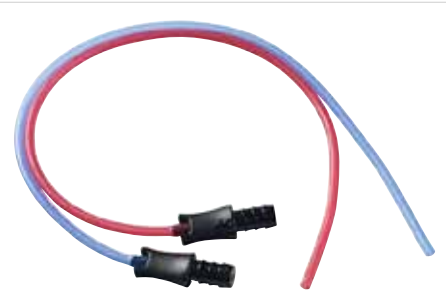
ABR

## Sanibel™ Infant EarCup™ adaptor set

Connects insert phones with Infant EarCups™. NB: Do not contain filters.

Part no.	Unit
8500450	Set/2 pcs

20 sets



ABR

## Sanibel™ sound tubes and Sanibel™ Infant EarCup™ adaptor kit

Includes adaptors, 1 blue and 1 red tube.

Part no.	Unit
8100577	Set/2 pcs

Easy ABR newborn hearing screening with the

# EARturtle™

The EARturtle™ disposables ear couplers is a new, soft, and easy-to-mount disposable ear coupler for ABR newborn hearing screening.

You can use it with the RadioEar IP30 adapter and similar transducer couplers.

- ✓ Safe to apply on sensitive skin  
(complies with ISO 10993-1:2018)
- ✓ Consistent and reliable performance
- ✓ Durable and user-friendly design



## EARturtle™ disposables ear couplers

For use with a range of different providers of newborn hearing screening equipment: **Interacoustics** Titan, Sera, **MAICO** easyScreen, MB 11 Classic, **GSI** Novus, **Natus** Echo-Screen, Echo-Screen III, Algo 3i, Algo 5, Algo 7, Biologic Abear.

No recalibration needed for any of the above-mentioned equipment.

Part no.	Description	Unit
8529735	Tab	Box/36 sets
8530442	Snap	Box/20 sets
8522749	w/o electrodes and alcohol pads	Box/20 sets



## EARturtle™ adapter for RadioEar IP30

Part no.	Unit
8515872	1 pc

# Disposable electrodes

Large, soft electrode size!

60 pcs



ABR

## Sanibel™ snap electrodes

Pre-gelled with a very gentle hydrogel, perfect for ABR testing on infants. Size 2.2 x 3 cm. Item no. 8107137 is packed in 20 smaller pouches of 3 electrodes. Intended use areas: Newborn, diagnostic follow-up, ABR, C-Vemp.

Part no.	Unit
8107137	Box/60 pcs (20x3 pcs)



Large, soft electrode size!

60 pcs



ABR

## Sanibel™ tab electrodes

Pre-gelled cloth electrode with a very gentle hydrogel, perfect for ABR testing on infants. Size 2.2 x 3 cm. Packed in 20 smaller pouches of 3 electrodes. Intended use areas: Newborn, diagnostic follow-up, ABR, C-Vemp.

Part no.	Unit
8107410	Box/60 pcs (20x3 pcs)



50 pcs



Not available in the EU

ABR

## Vermed Economy line 3-pack solid gel snap Electrode

Solid gel type snap electrode suitable for newborn screening and diagnostic follow-up. Latex free. Intended use areas: Newborn, diagnostic follow-up all ages.

Part no.	Unit
8516252	Bag/50 pcs



Not available in the EU

75 pcs



ABR

## Vermed Wetgel Snap Electrode

Pre-gelled hydrogel electrode with Ag/AgCl sensor. Very suitable for newborn screening or diagnostic follow up. Packaged 3 pcs. per pouch.

Part no.	Unit
8516221	Box/75 pcs



Not available in the EU

100 pcs



ABR

## Vermed Tab Electrode

Rectangular tab electrode for newborn screening. 12.7 x 22.9 mm. Conductive Adhesive Hydrogel. 10x10 pcs. per pouch.

Part no.	Unit
8516225	Bag/100 pcs



60 pcs



ABR

## Vermed Hydrogel Snap Electrode

Large soft electrode size making it very suitable for newborn screening and ABR measurements. Cloth material makes it convenient to wear. Size 3.4 x 2.2cm.

Part no.	Unit
8516907	Bag/60 pcs (3x20 pcs)

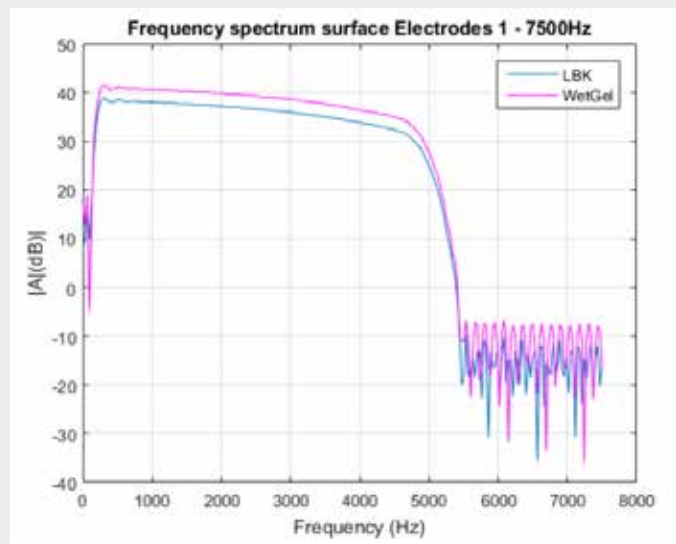


## Choose the correct electrode for optimal performance

Sanibel Supply® offers various kinds of surface electrodes for ECG as well as EEG and ABR. Surface electrodes vary in size, adhesion, connectivity and frequency (test category).

The frequency plot to the above shows the electrical stimuli sent directly through the system and compared to the surface electrode (here ABR). The two lines are similar and demonstrate that the surface electrode can be used for ABR testing.

**At Sanibel Supply®, we always test and validate our surface electrodes to ensure optimal performance for your testing!**



# Disposable electrodes



60 pcs

ABR

## Vermed Hydrogel Snap Electrode

Smaller than the rectangular version, but otherwise similar. Good, soft electrode size making it very suitable for newborn screening and ABR measurements. Cloth material makes it convenient to wear.

Part no.	Unit
8102022	Bag/60 pcs (3x20 pcs)



Not available in the EU



100 pcs

ABR

## Vermed Tab Electrode

Rectangular tab electrode for newborn screening. 22.9 x 34 mm. Conductive Adhesive Hydrogel. 10x10 pcs. per pouch.

Part no.	Unit
8516227	Bag/100 pcs



300 pcs

ABR

## Vermed Prewired neonatal eeg

Electrode for use in pediatric and neonatal settings. 3 electrodes per pouch. Square shape 22.2 x 22.2 mm.

Part no.	Unit
8107425	Bag/300 pcs (3x100 set)



50 pcs

ABR

## Vermed Economy Line Snap Wet Gel Electrode

Non-woven cloth electrode with conductive wet gel. Passed ISO 10993 and is Latex free.

Part no.	Unit
8516251	Bag/50 pcs



100 pcs

ABR

## Ambu® 0415M tab electrode

Medium size tab electrode with solid gel for 12-lead ECG. Presented conveniently with 10 pieces to a card. Fish tail tab design reduces electrode lift-offs. Suitable for both adults and children.

Part no.	Unit
8516138	Bag/100 pcs (10x10 pcs)



1000 pcs

ABR

## Ambu® 2300 Blue Sensor Tab electrode

The medium size Ambu BlueSensor 2300 electrode features a skin-friendly solid gel that provides optimal signal quality recordings during 12-lead diagnostic testing ECG application. Very suitable for ABR diagnostics of all kinds.

Part no.	Unit
8516139	Box/1000 pcs (10x100 pcs)



25 pcs

ABR

## Ambu® Blue Sensor™ N-00-S

Foam ECG electrode for use with button cables. Wetgel.

Part no.	Unit
8013029	Bag/25 pcs



25 pcs

ABR

## Ambu® Neuroline 720

Ambu Neuroline 720 electrodes are pre-gelled and self adhesive. They are ideal for use in sleep registration where the strong, yet skin-friendly, adhesion ensures that the electrode stays in place for the entire examination, even if the patient sweats.

Part no.	Unit
8500060	Bag/25 pcs



ABR

## Ambu® Neuroline 720 - with 100 cm cable and k-connector

Ambu Neuroline 720 electrodes are pre-gelled and self adhesive. They are ideal for use in sleep registration where the strong, yet skin-friendly, adhesion ensures that the electrode stays in place for the entire examination, even if the patient sweats.

Part no.	Unit
8503244	Bag/10 pcs



## Electrode cables



ABR

### Universal electrode cable

Available in Red (R), White (W), Blue (B), Yellow (Y), Black (K). 50 cm cable. Non-tangling.

Part no.	Unit
8011353	Set/3 pcs RWB
8011344	Set/5 pcs RWBYK

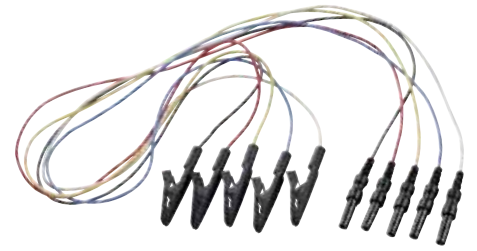


ABR

### Standard button cable

For use with snap electrodes. Available in Red (R), White (W), Blue (B), Yellow (Y), Black (K). 50 cm cable. Non-tangling.

Part no.	Unit
8011354	Set/3 pcs RWB
8011346	Set/5 pcs RWBYK



ABR

### Alligator clip cable

For use with tab electrodes. 1.5 mm/.060" female connector. Available in Red (R), White (W), Blue (B), Yellow (Y), Black (K).

Part no.	Unit
8516581	Set/3 pcs RWB
8513776	Set/3 pcs WYK
8516584	Set/5 pcs RWBYK

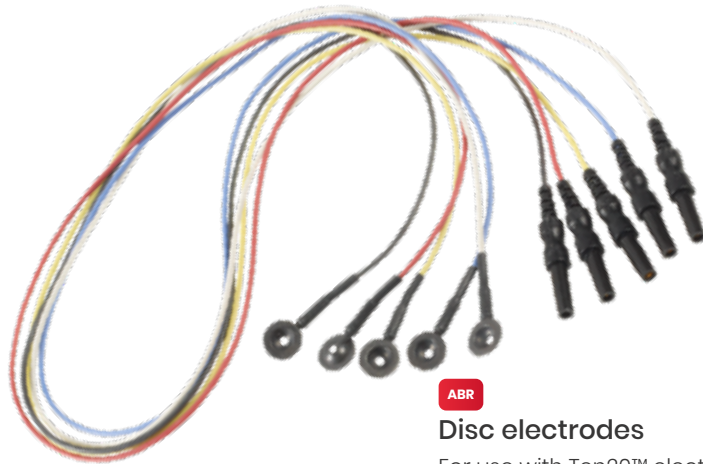


ABR

### Pinch style cable

For use with snap electrodes. 1.5 mm/.060" female connector. Available in Red (R), White (W), Blue (B), Yellow (Y), Black (K).

Part no.	Unit
8500390	Set/3 pcs RWB
8500400	Set/3 pcs WYK
8500410	Set/5 pcs RWBYK



ABR

### Disc electrodes

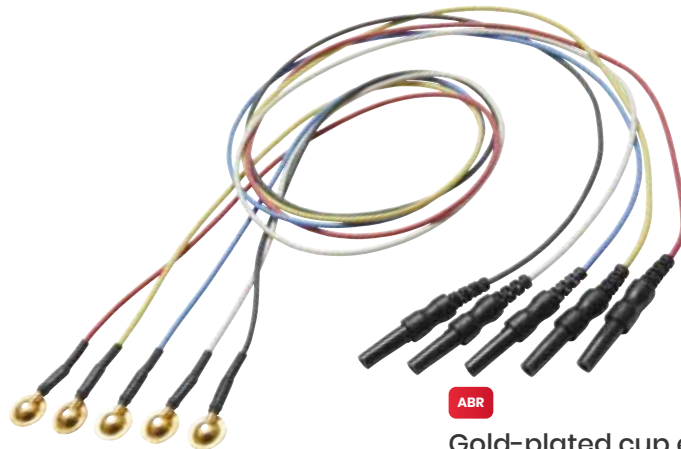
For use with Ten20™ electrode paste. Available in Red (R), White (W), Blue (B), Yellow (Y), Black (K). 50 cm cable.

Part no.	Unit
8011498	Set/3 pcs RWB
8011345	Set/5 pcs RWBYK

### After use ...

After use, cables should be wiped with a soft cloth that has been dipped in a mild detergent solution or alcohol.

Contact between the cleaning solution and the connectors should be avoided.



ABR

### Gold-plated cup electrodes

Available in Red (R), White (W), Blue (B), Yellow (Y), Black (K). Ø 10 mm gold-plated. 50 cm cable.

Part no.	Unit
8107418	Set/3 pcs RWB
8107145	Set/5 pcs RWBYK



# Surface electrodes tailored to your need

At Sanibel Supply® we believe that it is important to choose the correct surface electrode for each specific recording and patient type.

## Wetgel or hydrogel electrodes?

A wetgel electrode consists of water, thickener, ionic salts, surfactants and bactericides or fungicides. Wetgel migrates easily and rapidly onto the skin surface, reducing impedance levels, which in turn will generally result in lower noise in the recording.

A hydrogel surface electrode is less adhesive when compared to wetgel, making it particularly suitable for newborns.

## Chloride salt concentration

The higher the chloride salt content, the more conductive the electrode. Higher salt content (10% and above), pre-gelled surface electrodes are useful for making fast, high quality measurements of biopotentials. High conductivity electrodes generally have reduced artifact, due to the lower impedance generated between electrode and skin surface. As the chloride salt content drops, there is a corresponding reduction in electrode conductivity.

If the chloride content is below 10%, the electrode can then be employed for longer recording times, with a reduced risk of skin irritation. As a rule of thumb, wetgel has a chloride content of 10% and hydrogel 4%.

It is important to use electrodes with similar chloride salt content when testing.

The impedance of the electrode/skin junction is highly dependent on the electrolyte type and the chloride salt concentration. For example, a hydrogel electrode with 4% chloride concentration will have approximately 10x higher impedance than a wet liquid gel electrode with 10% chloride concentration, after first application to the skin.

## Adhesion

An advantage of a conductive adhesive is that the active surface can be as large as the electrode itself because no additional adhesive strip is needed. The Sanibel disposable electrodes come with a range of adhesive qualities. All electrodes are designed to adhere well to skin surfaces, but the adhesion characteristics can be grouped according to the application:

- Strong adhesive
- Moderate adhesive

Strong adhesion is not recommended for newborns.

## Skin preparation

For optimum electrode to skin conductivity, the skin should be lightly brushed with a gentle abrasive gel/wipe. **An alcohol wipe is not recommended to improve conductivity as this will only dry out the skin surface.**



## Patient preparation



ABR

### NuPrep™ skin prep gel, 114 g

Efficient, yet gentle skin abrasive. Chloride and acetone free. Pack of 1x4 oz/114 g tube or 3x4 oz/114 g tube.

Part no.	Unit
8500320	Box/3 tubes



ABR

### SignalGel®, 250 g

Bacteriostatic conductive saline electrode gel.

Part no.	Unit
8102628	Tube/250 g



ABR

### Ten20™ conductive EEG paste, 114 g/228 g

Adhesive gel for disc electrodes. Available in pack of 3x4 oz/114 g tubes or 3x8 oz/228 g jar.

Part no.	Unit
8012924	Box/3 tubes
8500330	Box/3 jars



ABR

### Spectra 360® electrode gel, 250 g

Salt- & chloride-free conductive electrode gel suitable for long-term applications.

Part no.	Unit
8500740	Tube/250 g



ABR OAE

### B Braun® alcohol pads

70% isopropyl alcohol.

Part no.	Unit
8500050	Box/100 pcs 

## Patient preparation



ABR

### Everi™ abrasive paste, 160 g

Reduces the skin impedance during EEG, EP, ECG and Holter Stress test examination.

Part no.	Unit
8012952	Bottle/160 g



ABR

### Sonavelle® electrode gel, 250 ml

Formaldehyde-free and glycerol-free.

Part no.	Unit
8500380	Bottle/250 ml



ABR OAE

### Gauze swabs

Non-sterile, 7.5 x 7.5 cm and 8 layered.

Part no.	Unit
8500040	Pack/100 pcs 



ABR

### 3M™ Red Dot™ trace prep, 5 m

One-step skin preparation. 18 mm x 5 m / 0.70" x 196".

Part no.	Unit
8500030	Dispenser/5 m



ABR

### 3M™ Transpore™ Surgical tape, 9.14 m

Transparent, latex-free, water-resistant and porous for breathability. 25 mm x 9.14 m / 1" x 10 LY.

Part no.	Unit
8500750	Box/12 rolls 



ABR

### 3M™ Micropore™ Surgical tape, 9.14 m

Latex-free and hypoallergenic. Holds well on damp skin. 25 mm x 9.14 m / 1" x 10 LY.

Part no.	Unit
8500760	Box/12 rolls 

# Infection control

A clean clinic is also part of your professional image

Infection control is so much more than cleaning probe tips, protecting your personal computer's keyboard, and maintaining high standards within hygiene using e.g. disinfectant detergent for a quick and extensive disinfection of non-invasive medical devices.

When it comes to infection control, preventing germs, dirt and dust from spreading via other sources, is also of critical importance – both to the safety of your patients and yourself! Gloves, shoe covers, facemasks, and aprons are just some of the “accessories”, which can help you succeed in this.

Maintain high, professional standards and make your clinic an ever-safe environment for your patients, making the wearing of gloves, facemasks and other body protection wear a natural part of the “patient interaction” process.



ABR IMP OAE

## Probe cleaning tool

For **Interacoustics** Titan™/AT235™/AA222™/Sera™/MT10™/**Amplivox** Otowaves/**MAICO** touchTymp MI22, MI23, MI24, MI26, MI34, MI36, MI44 + touchTymp™ and **GSI** TympStar™ Pro, Novus and Allegro.

Part no.	Unit
8011351	1 pc



ABR IMP OAE

## 3-in-1 floss

Used to clean probe tips.

Part no.	Unit
8003565	Box/100 pcs



ABR IMP OAE

## Bridge & Implant floss

Used to clean probe tips.

Part no.	Unit
8003566	Box/30 pcs



## Disinfecting Wipes

Cleaning and disinfecting wipes, specially designed for surfaces, instruments, healthcare seats and medical devices

Microbiological properties:

The solution's specific formulation has virucide actions (according to RKI, BGVV and DVV), bactericide actions (as per the EN 13727 standard) and fungicide actions (as per the EN 14562 standard) for a contact time of 1 minute.

The solution is effective on enveloped viruses (coronavirus, HIV, hepatitis).

Part no.	Unit
8525161	Canister with 90 wipes



## Safety goggles

Part no.	Unit
8522417	1 pc



## Nitrile examination gloves

For use at medical sites and at research institutes etc. Do not interact with petroleum oils, grease, solvents. Do not contain latex.

Part no.	Description	Unit
8515551	Small	Box/100 pcs
8515552	Medium	Box/100 pcs
8515553	Large	Box/100 pcs
8515554	Extra large	Box/100 pcs

## Disposable head covers

Perform high hygiene practices in front of your patients or clients.

Part no.	Unit
8519350	Box/ 100 pcs

## Disposable face masks

Perform high hygiene practices in front of your patients or clients.

Part No.	Description	Unit
8515555	Safety mask with loops	Box/50pcs

## Disposable apron

Keep a professional appearance also after servicing a hearing instrument.

Part no.	Unit
8519348	Box/100 pcs

## Disposable shoe covers

Perform high hygiene practices in front of your patients or clients.

Part no.	Unit
8519349	Box/100 pcs



## Hearing aid fitting



### Earlight with Scaled Top

Part no.	Description
8519357	Luxamed LED Ear light with acrylic scaled top, black
8519358	Luxamed Acrylic Top with Scale



### LED Earlite

The 18 Lumens light is concentrated in a small tip that fits most ears. Includes 2 AAA batteries.

Part no.	Unit
8527868	1 pc



### LED Earlite Tips

To be used with LED Earlite 8527868.

Part no.	Description	Unit
8527862	Straight	Bag 4 pcs
8527863	Pros	Bag 4 pcs
8527864	Scoop	Bag 4 pcs
8527865	Steel loop (S and L)	Bag 2 pcs

## Various items



5 pcs

### EARnimals®

Cartoon faces that are placed on the otoscope. Make ear examinations more fun for kids.

Part no.	Unit
8011501	Bag/5 pcs (assorted)



**VOLUME DISCOUNT AVAILABLE** for minimum orders of 10 rolls

OAE

**Thermal paper for ERO•SCAN™/OtoRead™, 25 m**

Width: 57 mm  
Inner diameter: 12 mm  
Outer diameter: 45 mm

Part no.	Unit
8500200	1 roll/25 m



**VOLUME DISCOUNT AVAILABLE** for minimum orders of 10 rolls

IMP

**TPR10™ thermal paper for MTP10™, 25 m**

Width: 79 mm  
Inner diameter: 12 mm  
Outer diameter: 45 mm

Part no.	Unit
8500220	1 roll/25 m



IMP

**Thermal paper LPQ80, 80 m**

For **gsi** TympStar™ Pro.  
Width: 80 mm  
Inner diameter: 13 mm  
Outer diameter: 80 mm

Part no.	Unit
8509893	1 roll/80 m



**VOLUME DISCOUNT AVAILABLE** for minimum orders of 10 rolls

ABR IMP OAE

**AP1300 thermal paper for Titan™, 10 m**

Width: 57 mm  
Inner diameter: 12 mm  
Outer diameter: 35 mm

Part no.	Unit
8500230	1 roll/10 m



ABR IMP OAE

**Sanibel™ MPT-III thermal paper, 20 m**

For Sanibel™ MPT-III printer which is supplied with **Interacoustics**® AT235™.

Width: 79 mm  
Inner diameter: 12 mm  
Outer diameter: 45 mm

Part no.	Unit
8500610	1 roll/20 m



IMP

**Adhesive thermal paper LPQ80, 195 labels**

For **gsi** TympStar™ Pro.  
Width: 82 mm  
Inner diameter: 25 mm  
Outer diameter: 88 mm

Part no.	Unit
8509894	1 roll/195 labels



**For OtoRead™ PRT MPT-II printer, 10 m**

Width: 57 mm  
Inner diameter: 8 mm  
Outer diameter: 30 mm

Part no.	Unit
8013009	1 roll/10 m



**VOLUME DISCOUNT AVAILABLE** for minimum orders of 10 rolls

IMP OAE

**Thermal paper for Sanibel™ MPT-II printer, 20 m**

For the Sanibel™ MPT-II printer which is supplied with **MAICO**® ERO•SCAN™, **Grason-Stadler**® Corti™ and **Interacoustics**® OtoRead™.

Width: 57 mm  
Inner diameter: 9 mm  
Outer diameter: 40 mm

Part no.	Unit
8029305	1 roll/20 m



AUD IMP

**TPR26™ thermal paper for Interacoustics®, 25 m**

Fits most popular audiometers and tympanometers.

Width: 112 mm  
Inner diameter: 12 mm  
Outer diameter: 45 mm

Part no.	Unit
8500210	1 roll/25 m



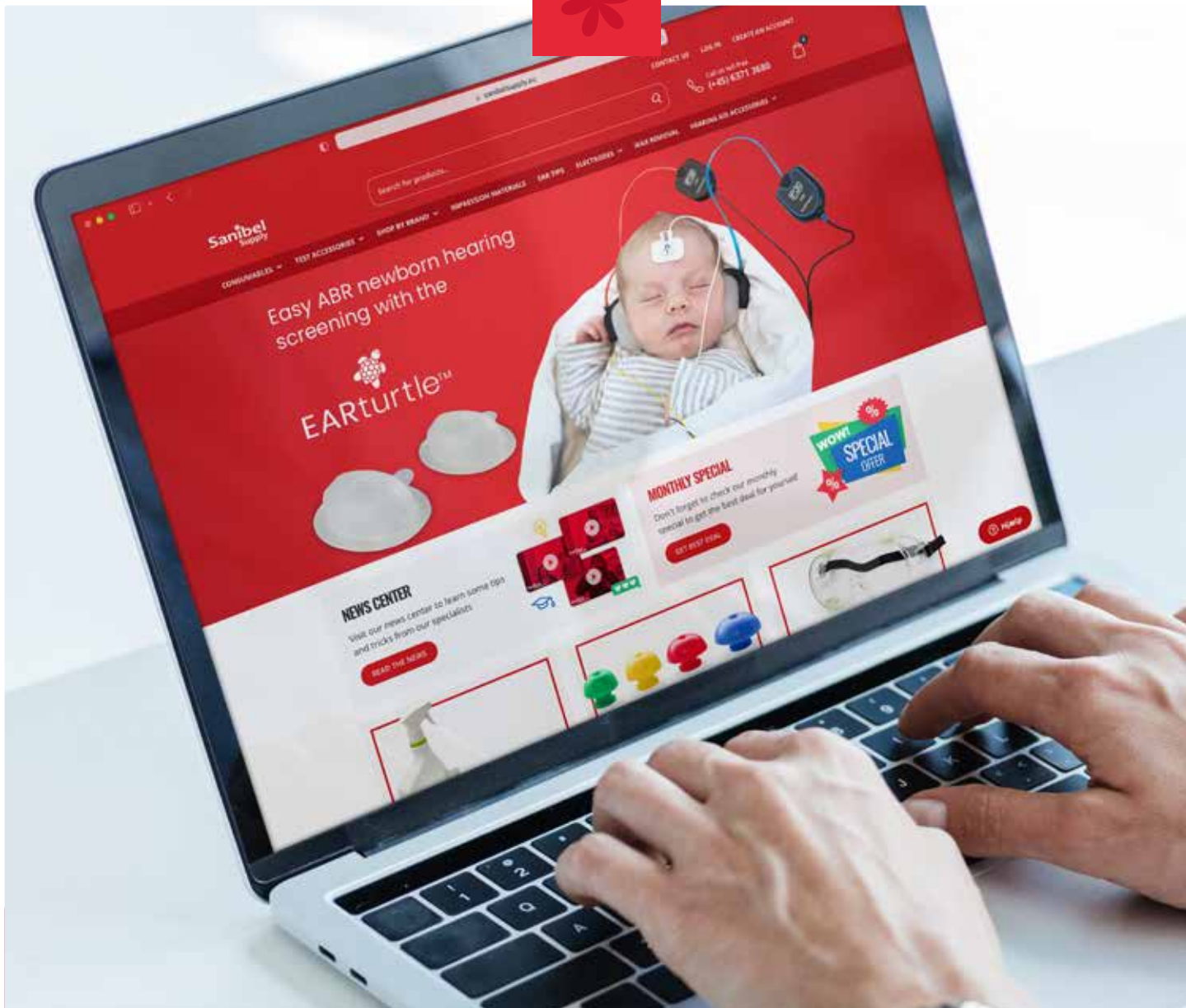
New

**Label paper roll HM-E200**

Label size:  
Width: 56 mm,  
Length: 60 mm  
R angle: 2

Roller size:  
Paper width: 57 mm  
Label spacing: 6 mm  
Core diameter: 13 mm  
Roller diameter: less or equal to 40 mm

Part no.	Unit
8519836	1 roll/120 labels



To order, please go to our website [www.sanibelsupply.eu](http://www.sanibelsupply.eu), send us an e-mail or contact your local diagnostic instrument distributor.



Sanibel Supply A/S • [info@sanibelsupply.com](mailto:info@sanibelsupply.com) • [www.sanibelsupply.eu](http://www.sanibelsupply.eu)

**Sanibel**  
Supply

**Disclaimer**

This catalogue has been published for worldwide distribution. Some parts described may NOT BE AVAILABLE in your area. Your local distributor will be pleased to give you details. For advice on compatibility and instructions of use, please consult your operation manual or local distributor. Sanibel Supply A/S assumes no legal liability or responsibility for the accuracy, typing errors or mistakes, correctness or completeness of any information in this flyer. The information in this flyer was correct to the best of our knowledge at the time of printing. Sanibel Supply A/S reserves the right to make changes at any time in specification of products described in this flyer without notice or obligation. MADSEN AccuScreen® and MADSEN OTOflex® are registered trademarks of Otometrics A/S. Echo-Screen®, AudX®, Navigator® Pro, and ABoar® are registered trademarks of Natus Medical Incorporated. Sanibel® is a registered trademark of Sanibel Supply®. All other instrument brands or model names are copyrighted or trademarked by their respective owners and are used only for reference.

